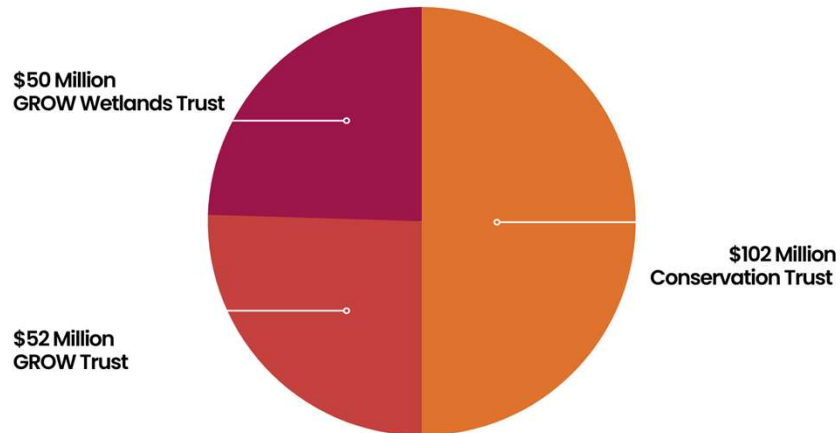




Welcome to today's presentation! We're here to learn about the GROW Program, an initiative designed to support sustainable land and water management practices.

## How is GROW Funded?



### **GROW and Conservation Trusts**

**2018:** Conservation Trust - \$102 million

**2019:** GROW Trust - \$52 million

- Supports WD delivery of GROW projects / incentives.

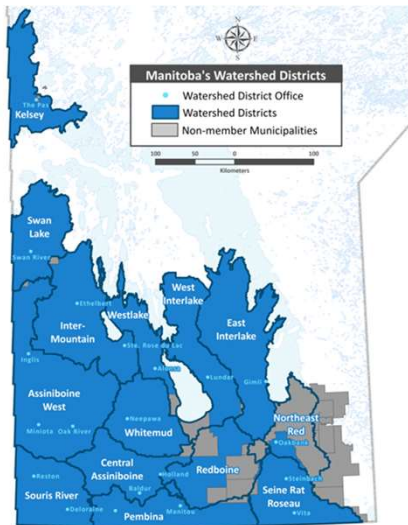
**2020:** Wetlands GROW Trust - \$50 million

Permanently Endowed with The Winnipeg Foundation.

Amount of funding available each year is based on the interest that the Trusts make.

MHHC Administers the Funding through a Competitive Granting Process.

**Stable, annual funding for Conservation Projects in Manitoba.**



# Watershed Based

---

GROW Programs established by Watershed Districts

Funding for Districts to develop a Local GROW Program to support actions and priorities from Integrated Watershed Management Plans (IWMPs)

## Local GROW Committee

---

Each Watershed District  
establishes a Local GROW  
Committee (LGC)

Representation by Agricultural  
Producers



Each Watershed District establishes a Local GROW Committee (LGC)  
Representation by Agricultural Producers

# Locally Driven and Producer Focused

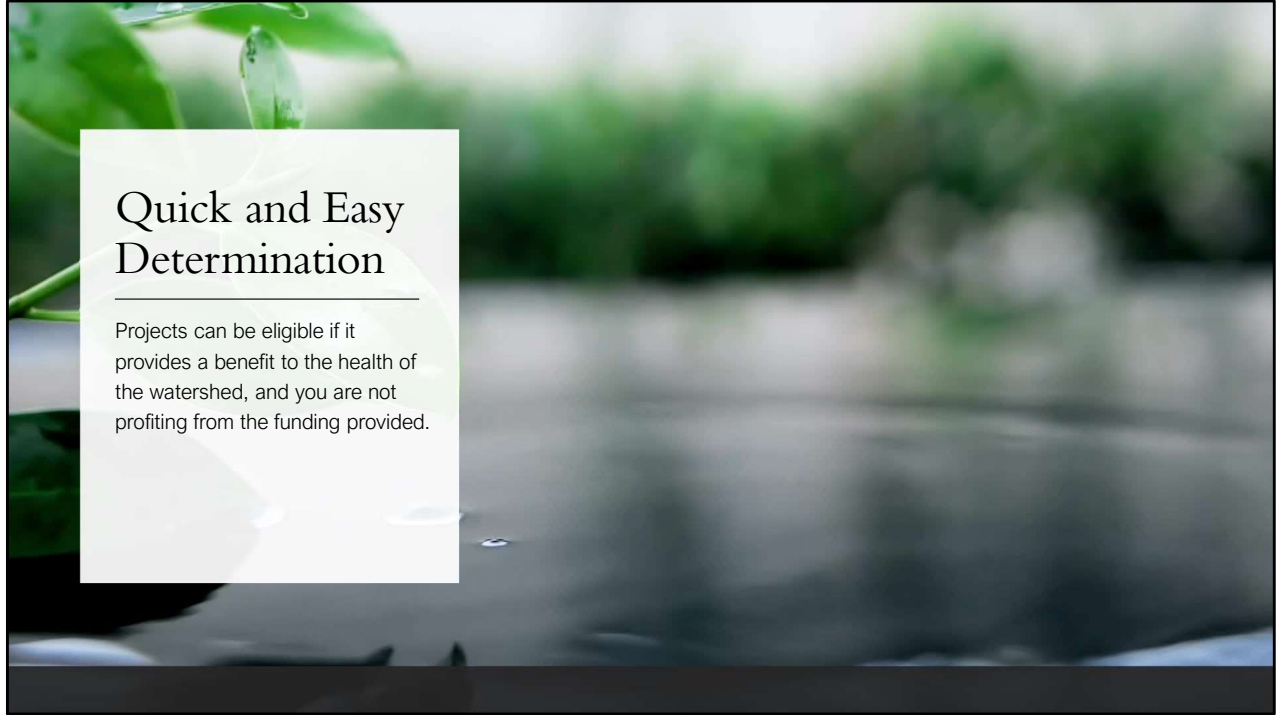


## Local GROW Committees:

1. Establish local priorities and target areas
2. Provide input on funding applications
3. Establish annual incentive payment rates and project cost-shares (how much landowner will contribute to projects)
4. Determine term lengths based on GROW criteria
5. Meet regularly to prioritize and approve projects
6. Spread the word! Promote the GROW program and help identify landowners. Share projects and good news stories with neighbours and community.

# Project Eligibility

GROW FUNDING



Projects can be eligible if it provides a benefit to the health of the watershed, and you are not profiting from the funding provided

# GROW Activities Catalogue

1. Water Retention
2. Wetland Conservation, Enhancement, Restoration
3. Riparian Area Management
4. Buffer Establishment – Shelterbelts, Perennial Cover
5. Upland Area Conservation, Enhancement, Restoration

**What is the GROW Program?**

Identified under the Water Pillar in Manitoba's Climate and Green Plan, Growing Outcomes in Watersheds (GROW) is a way of encouraging the delivery of ecological goods and services (EGS). GROW promotes conservation of natural areas or changes to land uses that provide EGS by helping farmers develop projects that maintain or improve local watershed health and work for their operations.

GROW is a made-in-Manitoba program on working lands that focuses on "farming the best, conserving the rest." With a focus on watershed health, management and resilience, GROW will help reduce flooding and drought vulnerability and improve water quality and nutrient management in Manitoba. The GROW framework will be delivered by watershed districts in partnership with landowners, non-government organizations, and all levels of government.

Principles	Co-Benefits	Priority Outcomes
<ul style="list-style-type: none"> <li>→ Watershed based</li> <li>→ Locally driven</li> <li>→ Producers focused</li> <li>→ Sustainable</li> <li>→ Advances incremental with existing EGS</li> <li>→ Collaborative</li> </ul>	<ul style="list-style-type: none"> <li>→ Improved on-farm water management</li> <li>→ Enhanced sustainable agricultural production</li> <li>→ Improved biodiversity and habitat</li> <li>→ Carbon sequestration and storage</li> </ul>	<ul style="list-style-type: none"> <li>→ Improved watershed resilience to the impacts of a changing climate (e.g., extreme weather events, drought, flooding)</li> <li>→ Improved water quality (e.g., improved nutrient management)</li> </ul>

**How can the GROW Program benefit me?**

There are two types of landowner incentives:

1. **Establishment costs** (one-time costs): The cost of establishing projects that provide enhanced or new EGS. These costs can include labour, equipment and material costs.
2. **Annual payments** (may not be eligible for all projects): Annual incentive payments for acres enrolled in Local GROW Programs will be available for producers.

**Apply Today**

Call the Coordinator (204) 529-4223  
 Go to our website www.redboine.com  
 Email the Coordinator GROW@redboine.com

A home-grown ecological goods and services program for Manitoba

**GROW**  
Growing Outcomes in Watersheds  
**GUIDE 2022**

CONSERVATION & GROW TRUSTS  
 Manitoba



# Water Retention

---

GROW ACTIVITY



Water Retention

Eligible Practices

# Water Retention

---

## Ineligible Practices



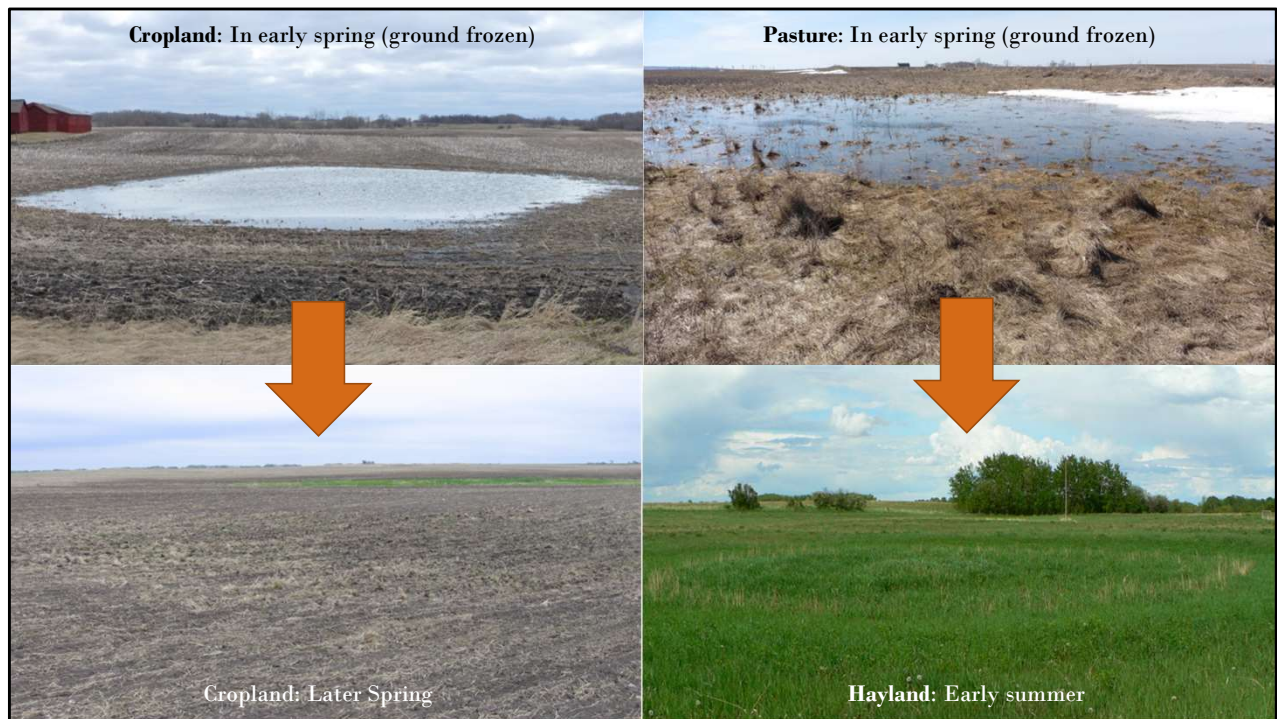
# Wetland Conservation, Enhancement & Restoration

---

GROW ACTIVITY



Wetland Conservation | Type ½ Wetlands



First wetlands to fill with standing water after snowmelt or storm events.

- Shallow water lasting only a few weeks after spring snowmelt and for several days after heavy rainstorms.
- Usually cultivated in the spring and can be seeded in dry and normal years. Class 2 wetlands can be flooded in wet years through spring seeding and sometimes seeded later than the rest of the land.
- Class 1 wetland vegetation in cultivated fields are more likely to have annual weedy species due to high levels of disturbance.

Class 1 wetlands in areas of permanent cover (native and tame pastures, haylands) are more likely to have perennial species like goldenrod, aster and Kentucky bluegrass



Wetland Enhancement | Eligible Practices



# Wetland Restoration | Eligible Practices



# Wetland Activity

## INELIGIBLE PRACTICES



Class 3 wetland in spring



Class 4 wetland in summer



Class 5 wetland in fall

### Ineligible

- Projects part of compensation requirements under The Water Rights Act
- Conservation of Class 3, 4 and 5 wetlands

# Riparian Area Management

---

GROW ACTIVITY



Riparian Conservation

Eligible Practices



Riparian Enhancement

Eligible Practices



# Riparian Restoration

## Eligible Practices

### Restoration

- Streambank stabilization

# Buffer Establishment – Shelterbelts, Perennial Cover

---

GROW ACTIVITY



Buffer Establishment

Eligible Practices

# Buffer Enhancement & Restoration

---

## Eligible Practices







Buffer

INELIGIBLE PRACTICES

# Upland Area Conservation, Enhancement, Restoration

---

GROW ACTIVITY



Upland Conservation

Eligible Practices



Upland Enhancement

Eligible Practices

# Upland Restoration

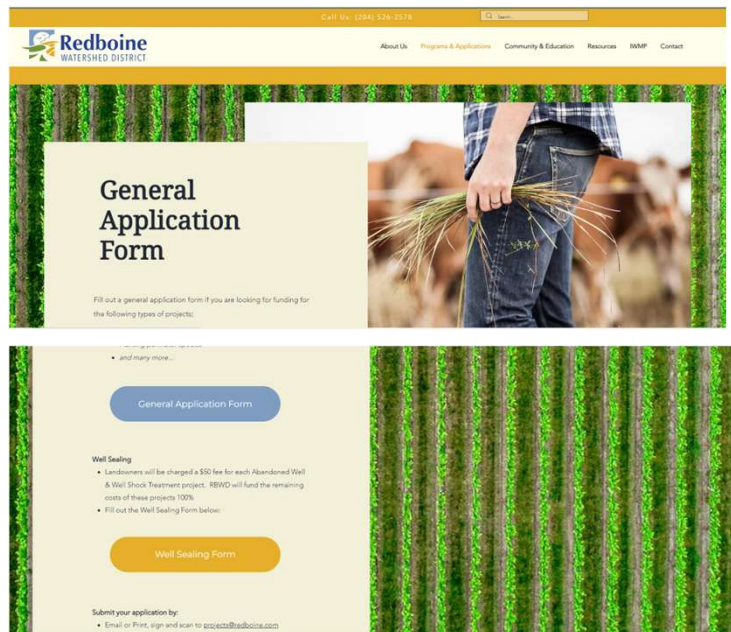
---

Eligible Practices



## How to Apply

1. Go to [www.redboine.ca](http://www.redboine.ca)
2. Go to Programs & Applications
3. Select **General Application Form**
4. Fill out Form and Submit



1. Go to [www.redboine.ca](http://www.redboine.ca)
2. Go to Programs & Applications
3. Select **General Application Form**
4. Fill out Form and Submit

# Application Helpful Hints



Provide as much detail as possible



Provide estimates and overall costs with proof (invoices, estimates)



Generally - apply BEFORE you purchase anything

**Provide as much detail as possible**

**Provide estimates and overall costs with proof (invoices, estimates)**

**Generally - apply BEFORE you purchase anything**



# Decision Making

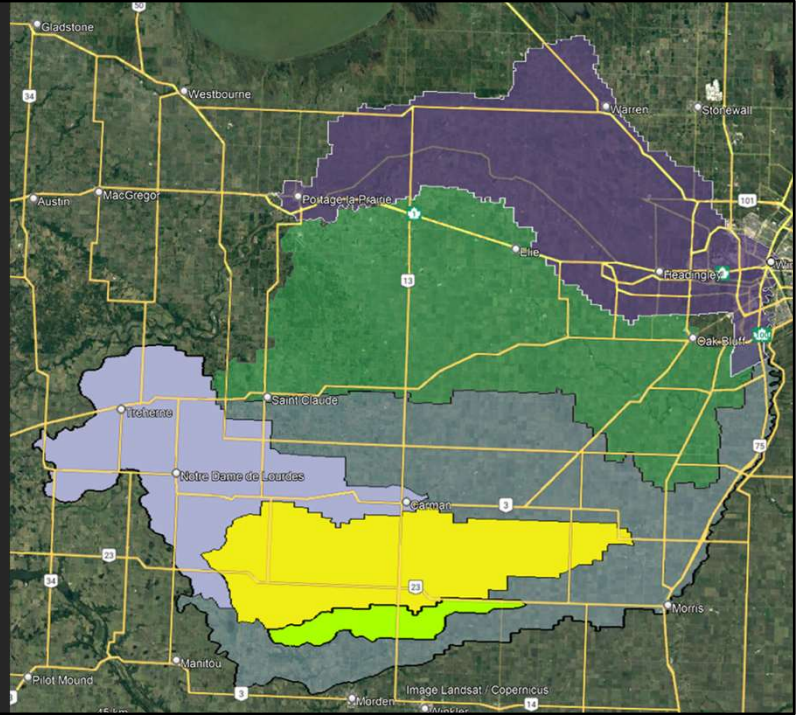
---

GROW COMMITTEE



# Target Areas

1. *Boyne-Morris IWMP*
2. *Stephenfield Lake IWMP*
3. *Tobacco Creek Model Watershed*
4. *AAFC Living Labs Project Area*
5. *La Salle River*
6. *Assiniboine River Basin Initiative*





# Prioritizing Projects

Incentive Rubric			
Type	Wetland (Class 1 & 2)	Pasture	
		Crop	
	Riparian	Water Course	
		Wetland (Class 3+)	
Upland	Shelterbelt	X	
	Permanent Cover		
Target Areas	GROW	1	1
	Red River Basin Commission Natural Resources Framework Plan	1	
	Assiniboine River Basin Initiative	1	
	Bouma Morris River IWMP	1	1
	Tobacco Creek Model Watershed	1	
	Stephenfield Lake WMP	1	1
	A&FC Living Labs Project Area	1	
	La Salle River IWMP	1	
Sub-District Target Areas	1		
Acres Protected, Red or Enhanced	0-5 acres	1	
	6-10 acres	2	
	11+ acres	3	3
Watershed vs Landowner Benefits	2:1 Project metrics that benefit watershed with no specific benefits to landowner	3	3
	1:1 Project metrics that benefit watershed as well as specific benefits to landowner	2	
	0:1 Project metrics with no watershed benefits & only benefits to landowner	1	
Risk of Conversion Calculator			
Operation	Crop	3	3
	Livestock	1	
Land Use	Mixed	2	
	Pasture	1	
	Hay	2	2
Land Value	Annual Crop	3	
	<\$3000	1	1
	\$3000 - \$6000	2	
	\$6000 - \$9000	3	
>\$9000	4		
		<b>Total Score</b>	<b>15 /21</b>
Incentive Rate			
Total Score	Support Percentage %	Risk Of Conversion	Payment/Acre
16+	100%	High	\$75.00
10-15	65%	Medium	\$50.00
5-9	35%	Low	\$25.00

Depending on the merits of the proposed projects and the available funding amounts, the GROW Committee may elect to award funding at a different level than the table above.

## Local GROW Committees meet regularly to approve projects

### Develop local priority calculators

- to align projects with GROW Guide
- Transparency in project approval process based on watershed health.
- Link to IWMP goals
- Prioritize local land management for watershed benefits.

# Incentives

---

## Annual Payments To Landowners

\$75-\$150 Per Acre

Up To 10 Year Contracts



## Establishment Costs

85% funding

15% landowner



### Considerations for establishment costs:

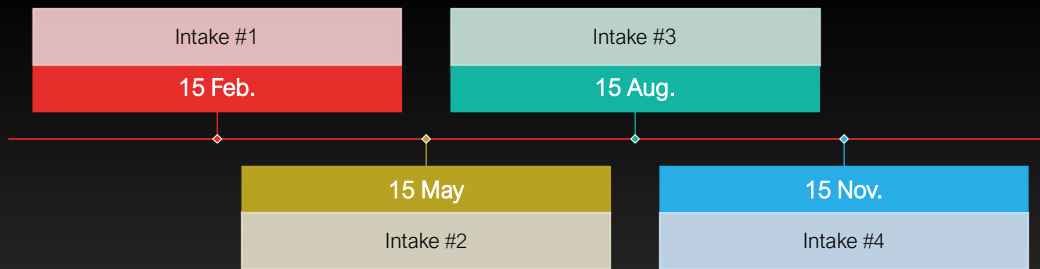
GROW committees should consider the landowner cost-shares (the amount the landowner contributes, either cash or in-kind, to the establishment of the project)

75-150/acre for incentive up to 10 years

Establishment cost covered at 85% percent, landowners must contribute 15%

# Timelines

---



Up to 4-6 weeks to process and get a response

Apply BEORE starting your project or before purchasing an item needed for your project

